

# Quick Installation Guide BEWARD N Series Network Cameras for Microsoft® Windows



This quick installation guide provides brief instructions necessary to access and view live video from the IP cameras. For more detailed information for a particular model, please refer to the related **Operations User Manual for BEWARD IP Cameras** or **Installation User Manual for BEWARD IP Cameras** that are on the CD that is included with BEWARD N series cameras.

## Liability Restriction

This product is covered by a limited warranty. Beward R&D Co., Ltd does not guarantee that this product will work as required in all mediums and applications, and does not give any representation or warranty, either expressed or implied, that this product will work properly in accordance with its performance capabilities and be operable in case of misuse. Beward R&D Co., Ltd is not liable for damages to this device or its interfaces (network, signal and other) that occurred as a result of:

- 1) improper transportation and storage;
- 2) force majeure (such as fire, flood, earthquake, etc);
- 3) the product is mounted, installed and operated not in accordance with the instructions provided in relation to this product;
- 4) incorrect firmware update;
- 5) misuse;
- 6) mechanical, thermal, chemical and other types of impact, if they exceed the product specification or are not supported by the product;
- 7) exposure to high voltage (lightning, static electricity, etc);
- 8) use a different power supply than the one supplied with the product;
- 9) use the camera outdoors (for outdoor cameras) without lightning protection;
- 10) use the camera with damaged housing.

Beward R&D Co., Ltd is not liable for operation of Internet service providers, electricity supply services, emergency services and security services. Beward R&D Co., Ltd is not liable for failures and errors of computers and network equipment.

## Recommended System Requirements

- Microsoft® Windows Vista, Windows 7
- Recommended browser: Internet Explorer 9.0 or later
- Network interface card
- 2.8 GHz Pentium 4 processor or AMD Athlon
- 256 MB video card
- 2 GB RAM

## Main Features

- Progressive scan CMOS sensor
- Resolution up to 1920x1080 (for two megapixel cameras)
- H.264/MPEG-4/MJPEG (H.264 is not supported by some BEWARD IP Cameras)
- Two-way audio
- Viewing live video on a mobile phone
- UPnP support
- Continuous and event-triggered sending of files to e-mail and FTP
- Recording to network attached storage

## Package Contents

- IP camera (lens pre-installed)
- Bracket
- Power supply
- CD with software and user manuals
- Quick installation guide
- Mounting kit
- Package

**IMPORTANT:** Package content may vary depending on the camera model. For more information, please refer to [www.beward.eu](http://www.beward.eu).

■ 1 ■

## 1. Installing the IP camera

**1.1.** Plug one end of an Ethernet cable into your camera, plug the other end of this cable into the Ethernet port on your switch (router) or directly into the networking port of your computer (for more details, see the related installation manual, which you can find on the included CD).

**1.2.** Use only the power supply that is included with your camera or you can use a switch (router, injector) with PoE support to power the camera.



**IMPORTANT:** Some BEWARD IP cameras do not support PoE (supplying an IP camera with power over a twisted pair cable). For information about PoE support, please refer to the related Installation user manual. Simultaneous power supply over a switch (router, injector) with PoE support and the camera's power cord socket is prohibited!

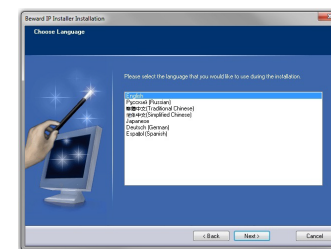
■ 2 ■

## 2. Installing the software for searching and setting up the IP cameras

**2.1.** Insert the supplied CD into your CD-ROM drive. If CD autorun is disabled, select the CD-ROM drive and run «**autorun.exe**». In the opened window, select «**Beward IP Installer**» (software for searching and setting up the IP cameras on a network).



**2.2.** After that, the installation of «**Beward IP Installer**» software will start. Follow the instructions of the installation wizard until the installation ends.

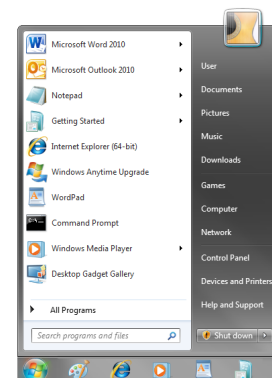


■ 3 ■

## 3. Connecting to the IP camera (for Windows 7)

**3.1.** The default IP address of BEWARD N series IP cameras is **192.168.0.99**. To connect to the camera, you need to get your computer and your camera on the same subnet, which means that your computer's IP address must be within the range of **192.168.0.1-255**. If you are sure that the IP address for your computer's network interface card is **192.168.0.XXX**, then you can skip paragraphs 3.2 - 3.9.

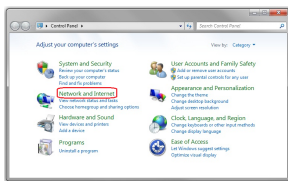
**NOTE:** All Beward cameras have the same default IP address, which is **192.168.0.99**. Do not connect several cameras simultaneously to the same local network for their initial setup! If you are going to use several Beward IP cameras, you need to change their default IP address so that each camera will have a unique IP address!



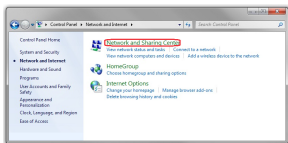
**3.2.** Open [Start] menu and select [Control Panel].

■ 4 ■

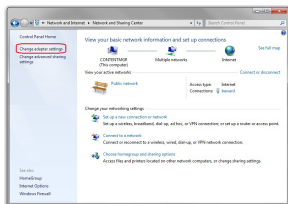
3.3. Select **[Network and Internet]** in **[Control Panel]** window.



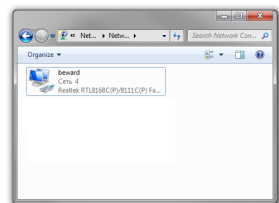
3.4. Select **[Network and Sharing Center]** in the opened window.



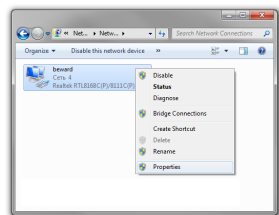
3.5. Click **[Change adapter settings]** in the left column.



■ 5 ■

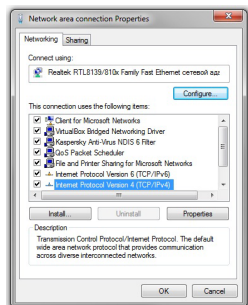


3.6. Select the network adapter your camera is connected to.

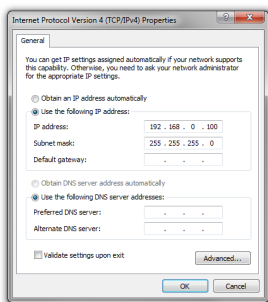


3.7. Click right mouse button on the selected adapter and open the **[Properties]** menu.

3.8. The connection properties window is opened. To set an IP address, select **[Internet Protocol Version 4 (TCP/IP)]** and click the **[Properties]** button.



■ 6 ■



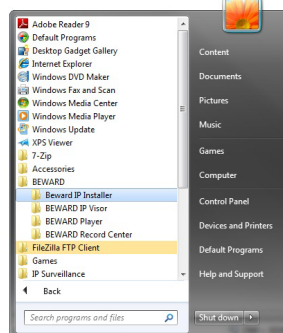
3.9. Click **[Use the following IP address]**, type an IP address similar to **192.168.0.XXX** in the IP address field (for example, **192.168.0.100**) and set the subnet mask to be **255.255.255.0** in the opened window.

**NOTE:** To prevent an IP address conflict, contact your system administrator for the correct IP address for your IP camera. Otherwise, the IP address conflict can cause network devices to function improperly.

#### 4. Viewing live video from the camera

4.1. Launch Beward IP Installer software (default location of the software is: **C:\Program Files\Beward\Beward IP Installer**).

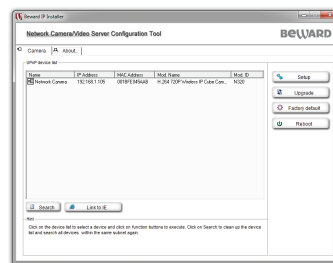
To do so, go to **Start – All Programs – Beward – Beward IP Installer** and choose **[Beward IP Installer]**.



■ 7 ■

4.2. The software window will open. Click **[Search]** button to find all the BEWARD N series IP cameras that are connected to the local network (to search cameras in Windows XP, it is necessary to enable UPnP support).

**NOTE:** Third party software (e.g. firewalls) may block search of IP cameras. To avoid it, add **Beward IP Installer** software to the authorized applications list.



4.3. Click left mouse button on your camera, then click **[Open in IE]** button. Windows security window will open.

4.4. Enter the camera's **[User name]**, **[Password]** and click **[OK]** button. After that, the camera web interface window will open.

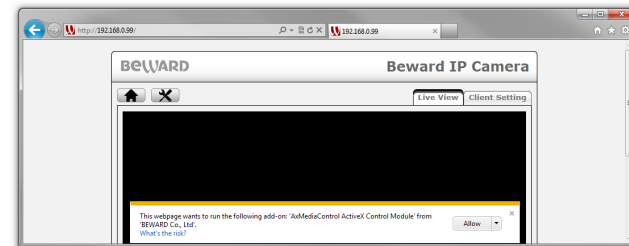


**IMPORTANT:** Default user name is **admin**, default password is **admin**.

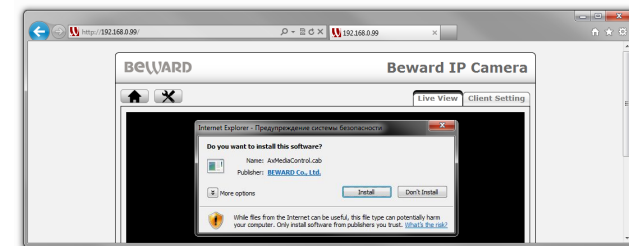
**NOTE:** Web interface windows may vary depending on the model of your camera. However, the steps to get live video from the cameras are similar.

■ 8 ■

4.5. After successful authorization, you will be prompted to install an ActiveX add-on. You will see a system notification under the address bar: "This webpage wants to run the following add-on: "AxMediaControl ActiveX Control Module" from «BEWARD Co., Ltd".



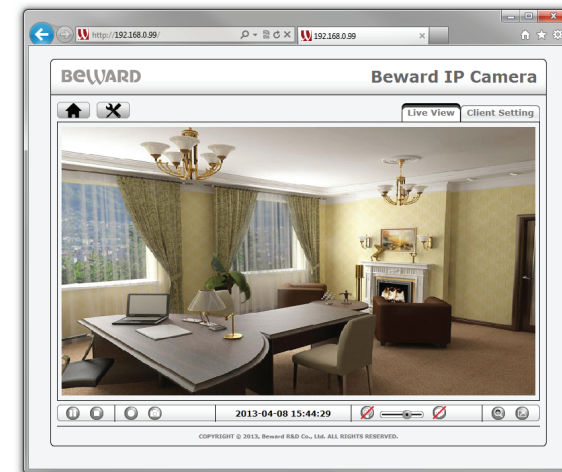
4.6. Press **[Allow]** to continue the installation.



■ 9 ■

4.7. By default, Windows 7 blocks launch and installation of software (depends on selected security level). The **[Security Warning]** window will appear where you need to click **[Install]** to continue the ActiveX add-on installation.

4.8. The ActiveX add-on is installed and if everything was done correctly, you should get the camera image.



■ 10 ■